

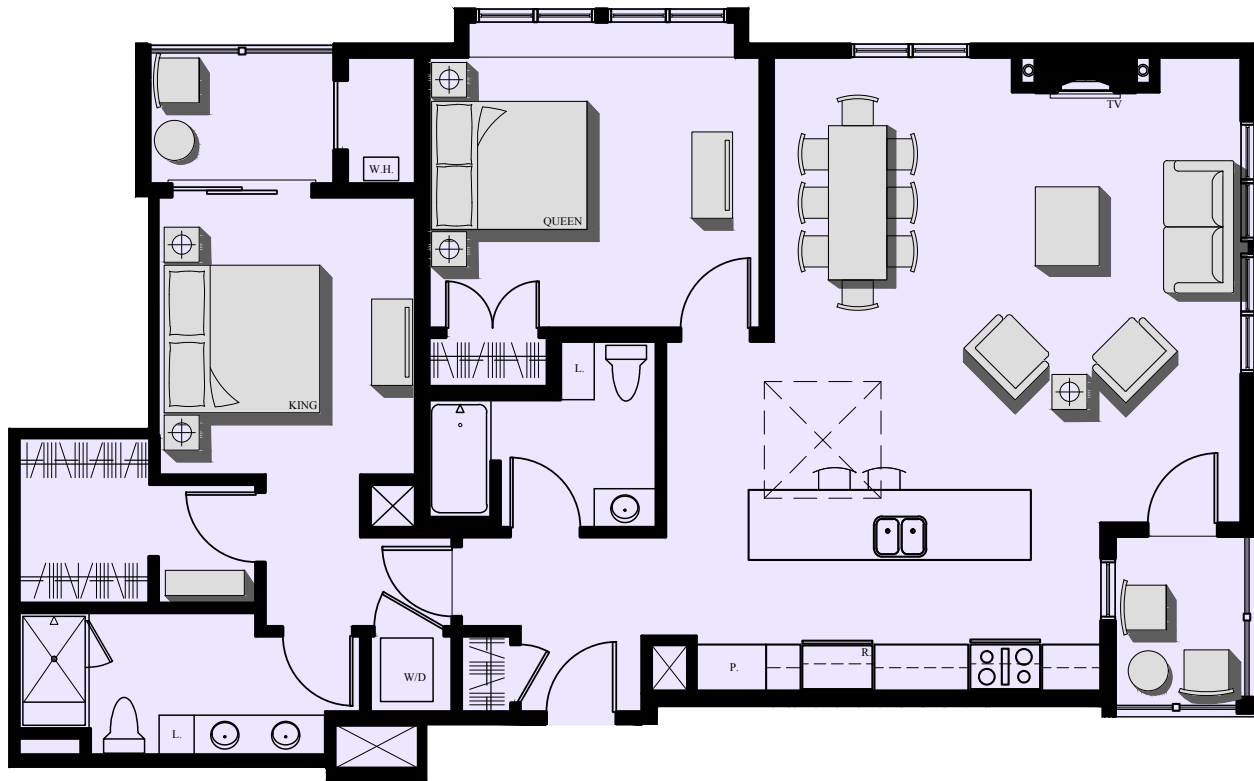


# 113 Newbury

Luxury Downtown Condominiums

Newbury Street • Portland, ME

Occupancy Summer 2016



## UNIT 410

**2-BEDROOM**

**2 BATHS**

**1,373 SF**

**92 SF DECK**

**1 COVERED & 1 UNCOVERED PARKING**

\* AREA'S SHOWN ARE FOR MARKETING ONLY,  
FINAL AREAS & HEIGHTS MAY VARY \*

Visit our Sales Center at 15 Middle St. Suite A2

Visit us Online  
[www.113Newbury.com](http://www.113Newbury.com)

Call: Sandra Johnson  
+1 (207) 415-2128

Call: Gail Landry  
+1 (207) 650-8893

