

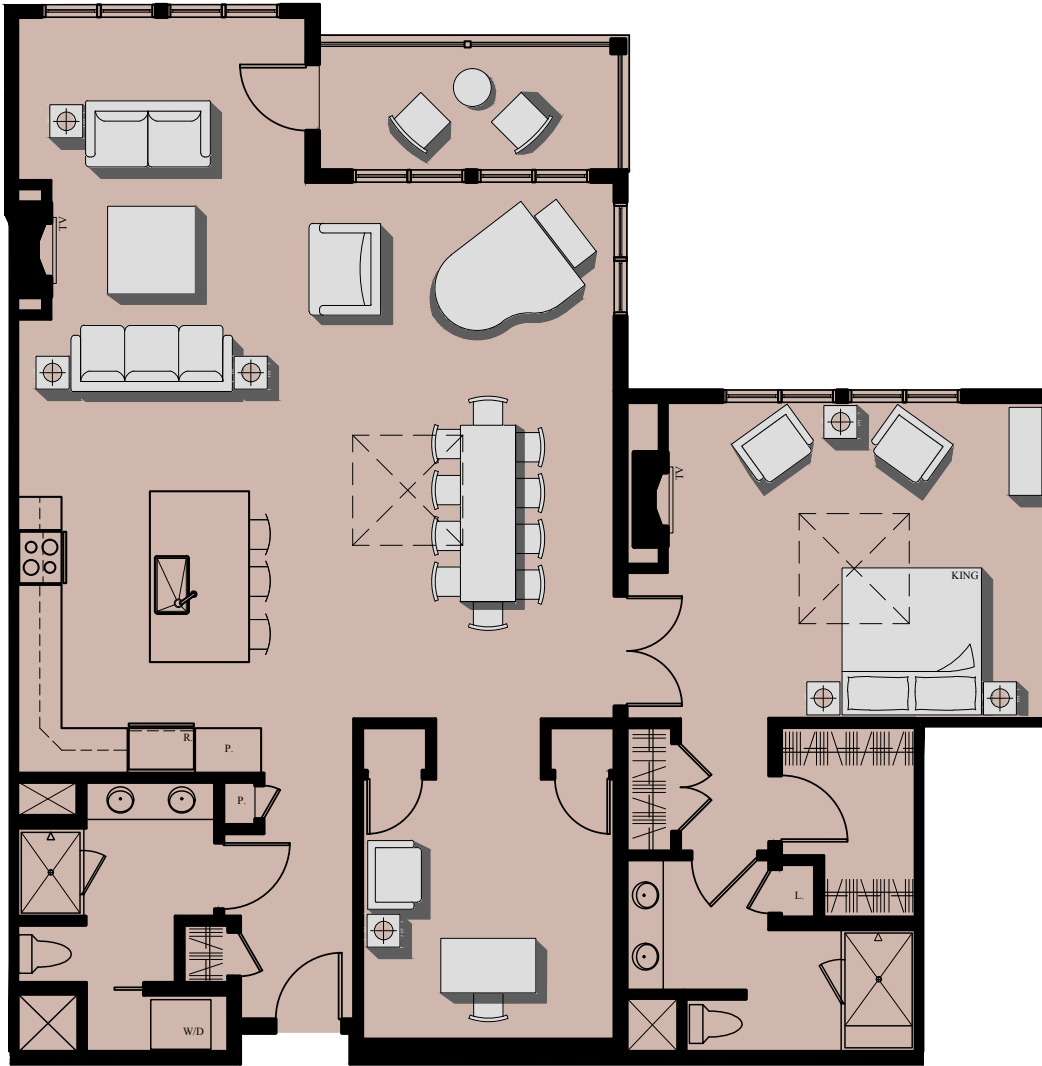


# 113 Newbury

Luxury Downtown Condominiums

Newbury Street • Portland, ME

Occupancy Summer 2016



## UNIT 409

**1-BEDROOM**  
**2 BATHS**  
**1,732 SF**  
**59 SF DECK**  
**1 UNCOVERED PARKING**

\* AREA'S SHOWN ARE FOR MARKETING ONLY,  
FINAL AREA'S & HEIGHTS MAY VARY \*

Visit our Sales Center at 15 Middle St. Suite A2

Visit us Online  
[www.113Newbury.com](http://www.113Newbury.com)

Call: Sandra Johnson  
+1 (207) 415-2128

Call: Gail Landry  
+1 (207) 650-8893

