

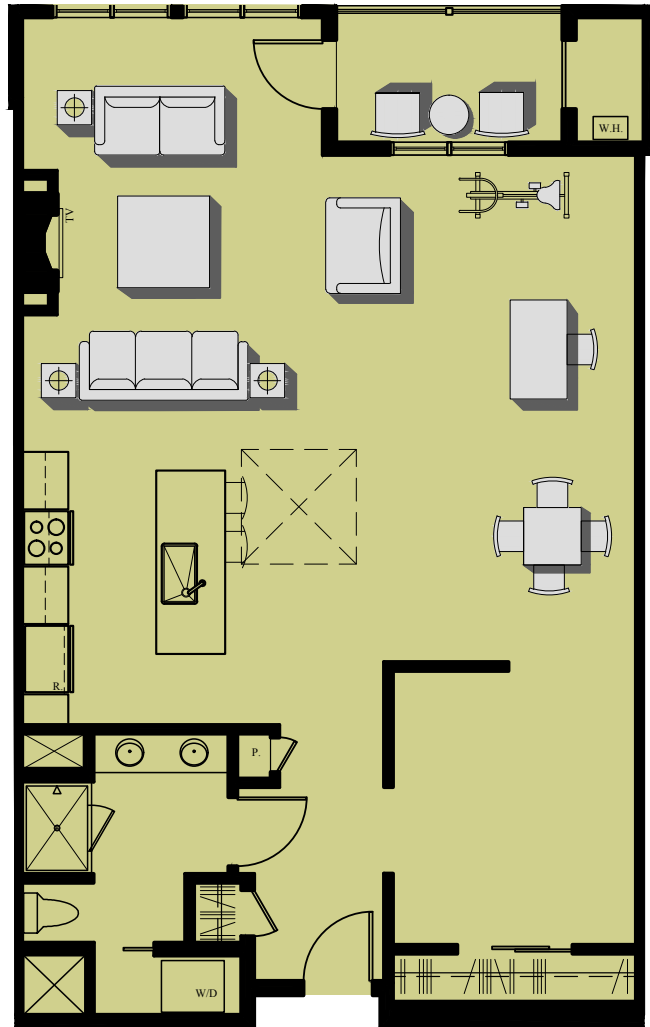


113 Newbury

Luxury Downtown Condominiums

Newbury Street • Portland, ME

Occupancy Summer 2016



UNIT 408

LOFT
1 BATH
1,150 SF
59 SF DECK
1 UNCOVERED PARKING

* AREA'S SHOWN ARE FOR MARKETING ONLY,
 FINAL AREAS & HEIGHTS MAY VARY *

Visit our Sales Center at 15 Middle St. Suite A2

Visit us Online
www.113Newbury.com

Call: Sandra Johnson
 +1 (207) 415-2128

Call: Gail Landry
 +1 (207) 650-8893

