

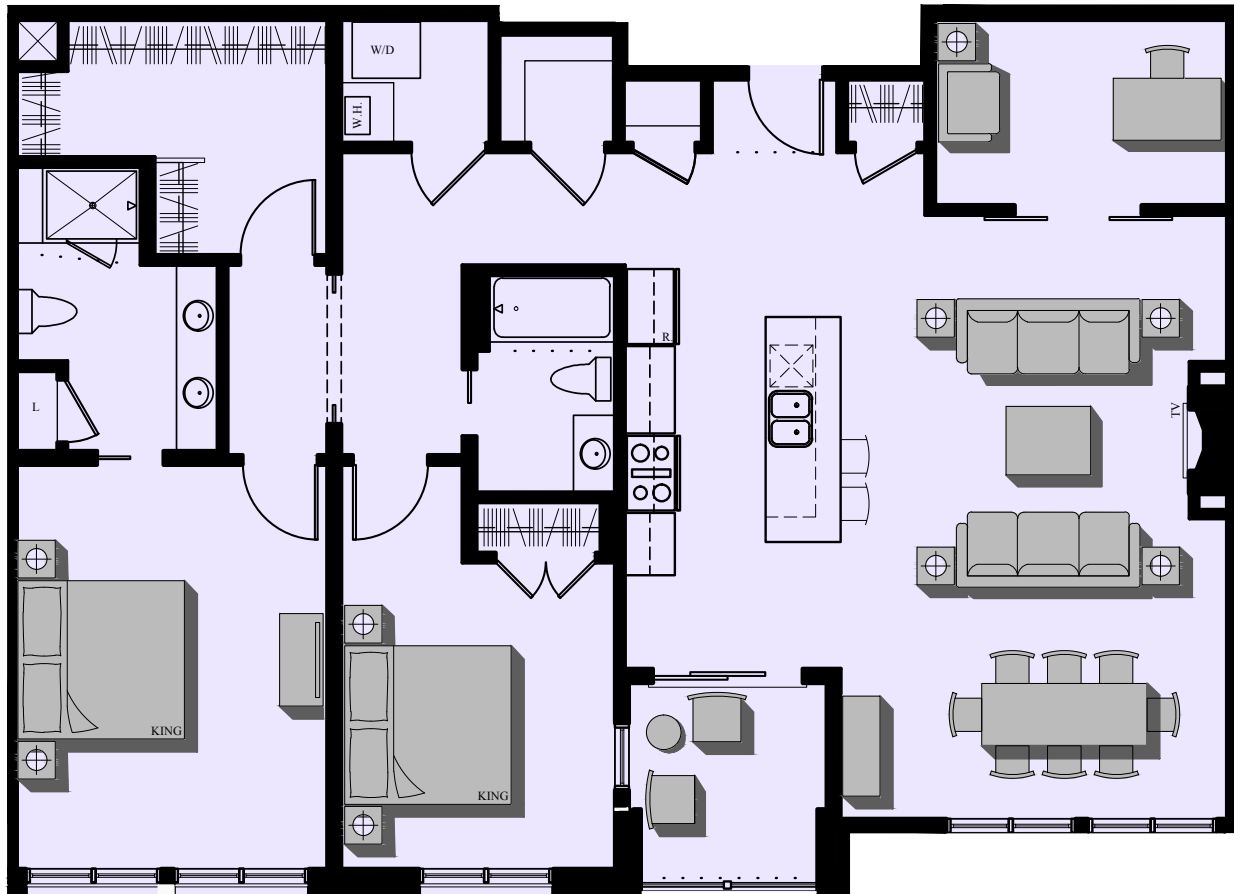


113 Newbury

Luxury Downtown Condominiums

Newbury Street • Portland, ME

Occupancy Summer 2016



UNIT 302

2-BEDROOM

2 BATHS

1,590 SF

66 SF DECK

1 UNCOVERED PARKING

* AREA'S SHOWN ARE FOR MARKETING ONLY,
FINAL AREAS & HEIGHTS MAY VARY *

Visit our Sales Center at 15 Middle St. Suite A2

Visit us Online
www.113Newbury.com

Call: Sandra Johnson
+1 (207) 415-2128

Call: Gail Landry
+1 (207) 650-8893

