

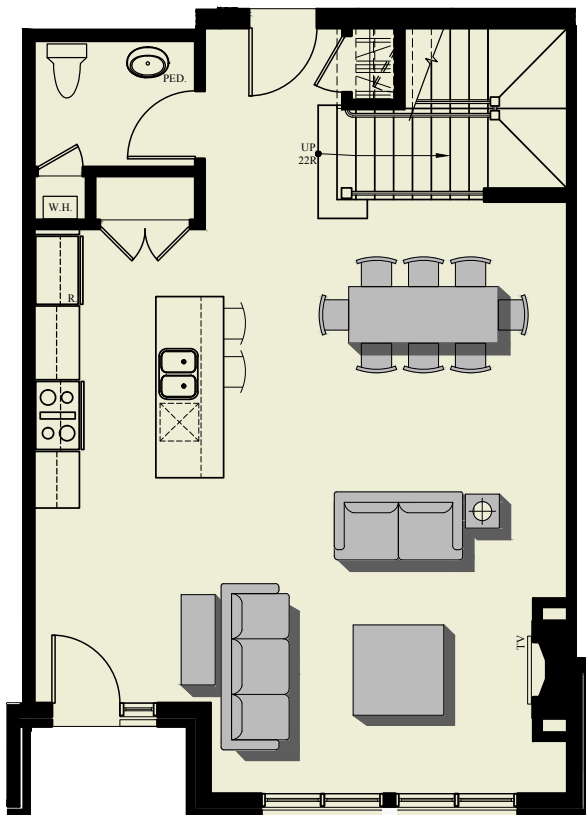


113 Newbury

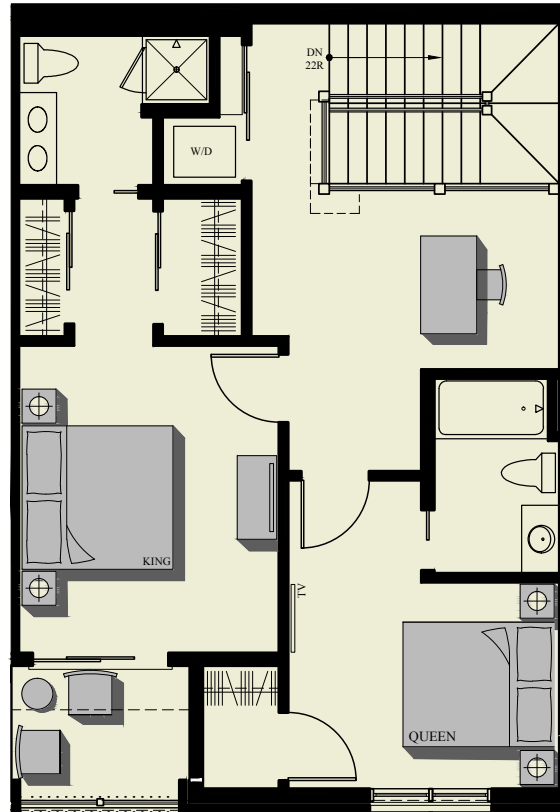
Luxury Downtown Condominiums

Newbury Street • Portland, ME

Occupancy Summer 2016



STREET LEVEL



UPPER LEVEL

UNIT 107

2-BEDROOM
2-1/2 BATHS TOWNHOUSE
1,660 SF
47 SF DECK
1 COVERED PARKING
12'-5" 1ST FLOOR CEILING

* AREA'S SHOWN ARE FOR MARKETING ONLY,
FINAL AREAS & HEIGHTS MAY VARY *

Visit our Sales Center at 15 Middle St. Suite A2

Visit us Online
www.113Newbury.com

Call: Sandra Johnson
+1 (207) 415-2128

Call: Gail Landry
+1 (207) 650-8893

