

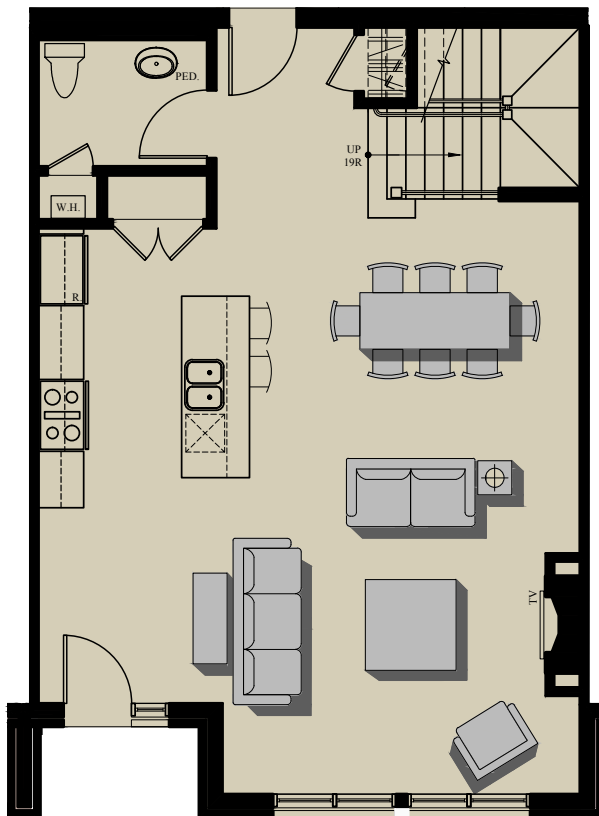


# 113 Newbury

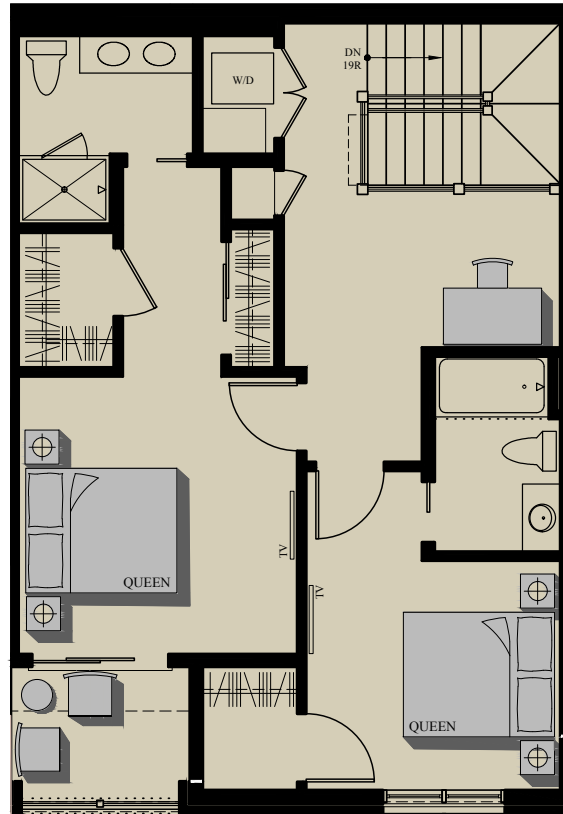
Luxury Downtown Condominiums

Newbury Street • Portland, ME

Occupancy Summer 2016



**STREET LEVEL**



**UPPER LEVEL**

## UNIT 104

**2-BEDROOM**  
**2-1/2 BATHS TOWNHOUSE**  
**1,653 SF**  
**47 SF DECK**  
**1 COVERED PARKING**  
**10'-5" 1ST FLOOR CEILING**

\* AREA'S SHOWN ARE FOR MARKETING ONLY,  
 FINAL AREAS & HEIGHTS MAY VARY \*

Visit our Sales Center at 15 Middle St. Suite A2

Visit us Online  
[www.113Newbury.com](http://www.113Newbury.com)

Call: Sandra Johnson  
 +1 (207) 415-2128

Call: Gail Landry  
 +1 (207) 650-8893

