

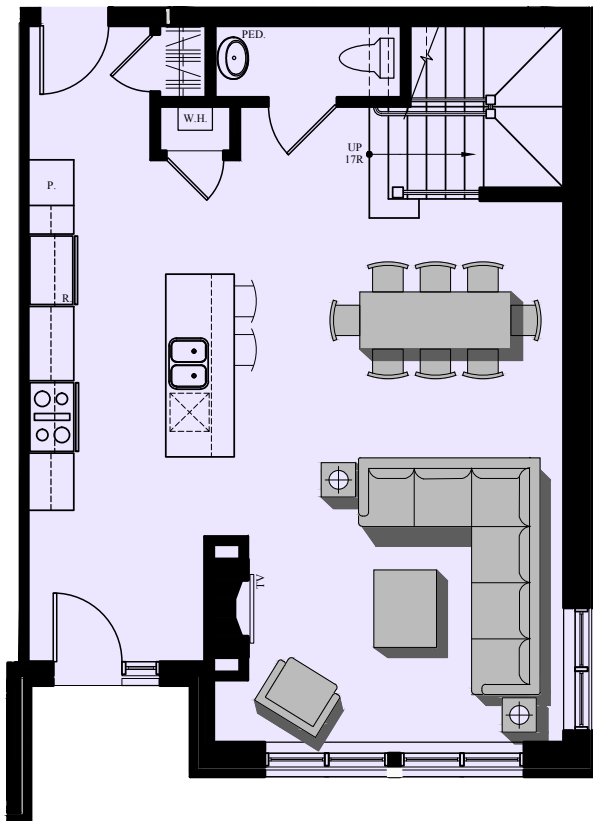


# 113 Newbury

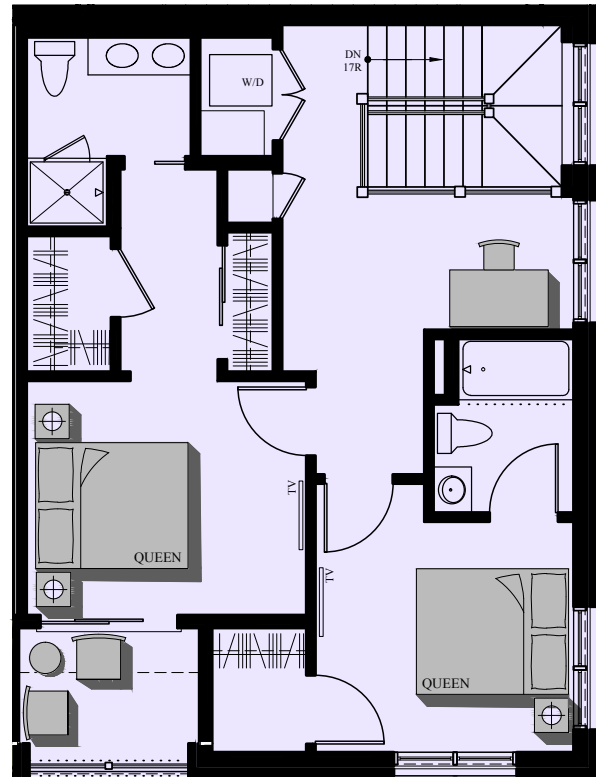
Luxury Downtown Condominiums

Newbury Street • Portland, ME

Occupancy Summer 2016



**STREET LEVEL**



**UPPER LEVEL**

## UNIT 101

**2-BEDROOM  
2-1/2 BATHS TOWNHOUSE  
1,552 SF  
47 SF DECK  
1 COVERED PARKING  
9'-1" 1ST FLOOR CEILING**

\* AREA'S SHOWN ARE FOR MARKETING ONLY,  
FINAL AREAS & HEIGHTS MAY VARY \*

Visit our Sales Center at 15 Middle St. Suite A2

Visit us Online  
[www.113Newbury.com](http://www.113Newbury.com)

Call: Sandra Johnson  
+1 (207) 415-2128

Call: Gail Landry  
+1 (207) 650-8893

